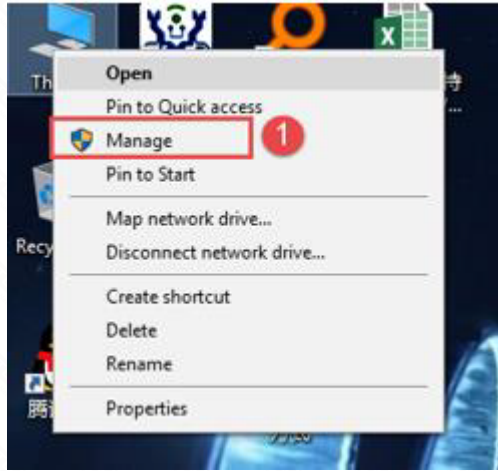


A1000UA Channel Range Change

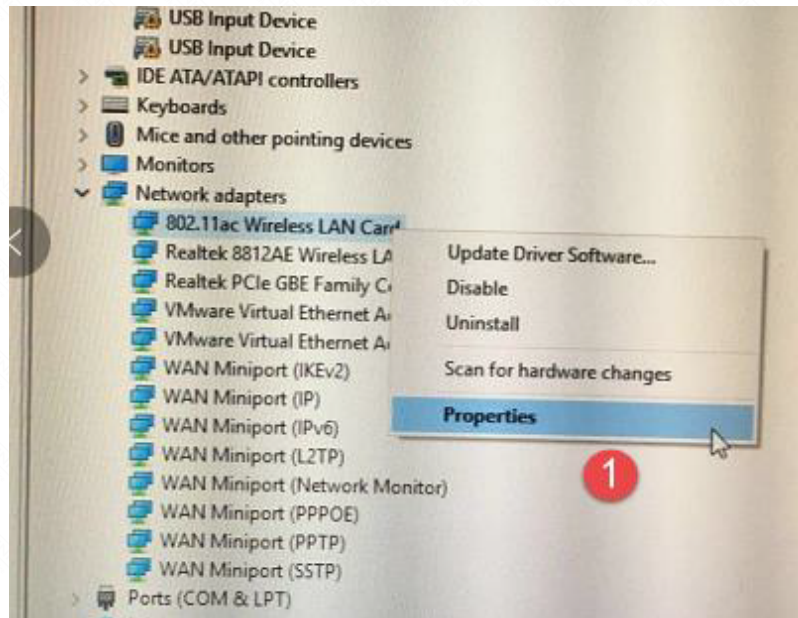
It is suitable for : **A1000UA**

STEP-1: Open the device manager

- 1 Right-click This PC and select manage



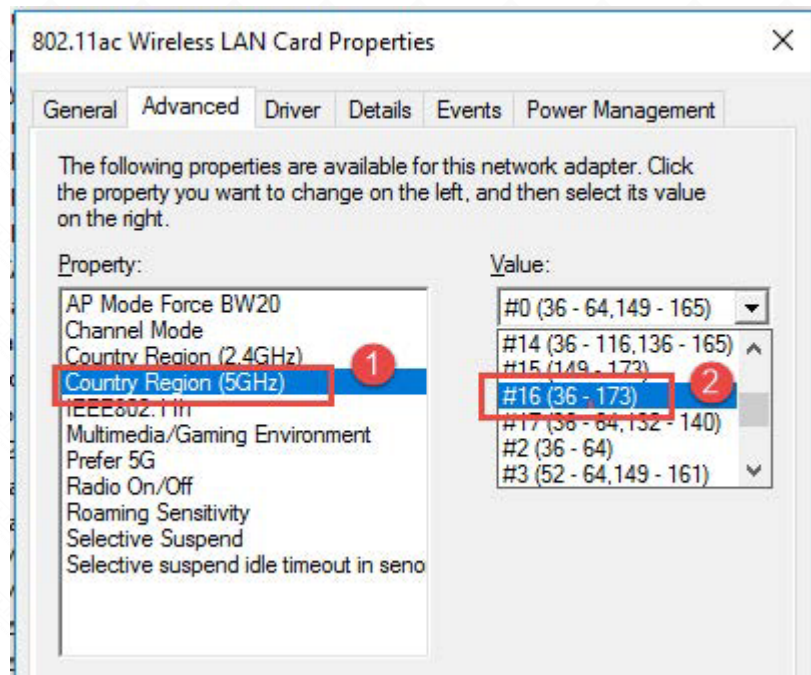
- 2 Click device manager
- 3 Click network adapters
- 4 Select 802.11ac Wireless LAN Card



STEP-2: Choose 2.4G country region

- 1 Right click→properties
- 2 Click Advanced
- 3 Click Country Region (2.4GHz)
- 4 In Value options select #1 (1-13)

Note: Can meet most of the router (AP) requirements



STEP-3: Choose 5G country region

- 1 Click Country Region (5GHz)
- 2 In Value options select #16 (36-173)

Note: Can meet most of the router (AP) requirements

