

TOTO LINK

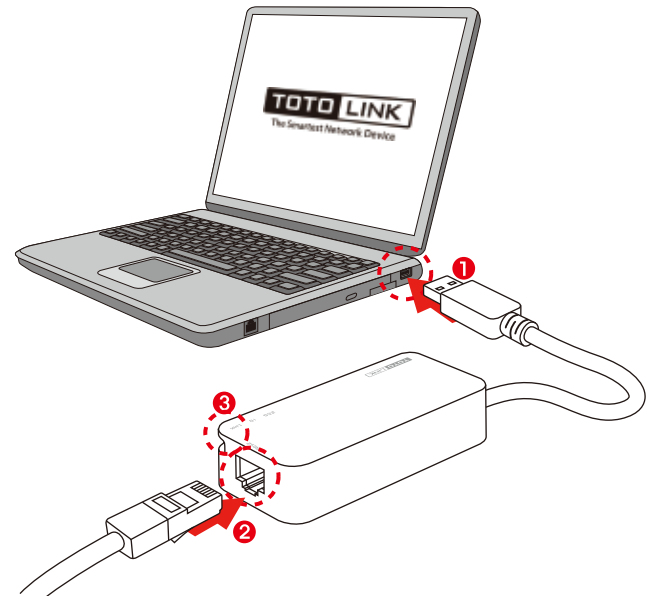
The Smartest Network Device

Quick Installation Guide

USB to LAN Adapter

Apply to: U100, U1000, U2500
(Take U2500 as an Example)

Copyrights © TOTOLINK. All rights reserved.
Information in this document is subject to change without prior notice.



- ① Connect to PC/NB's USB port.
- ② Connect to U2500's RJ45 port.
- ③ The blue LED will light up and flashes if the adapter and Ethernet cable are properly connected.

Note:

- For Windows XP/Vista/7/8/8.1/10/11, this adapter will automatically start installation.
- For Mac OS 10.6~10.14 or Linux 4.XX, please download and install a driver from TOTOLINK official website.