

TOTOLINK
The Smartest Network Device

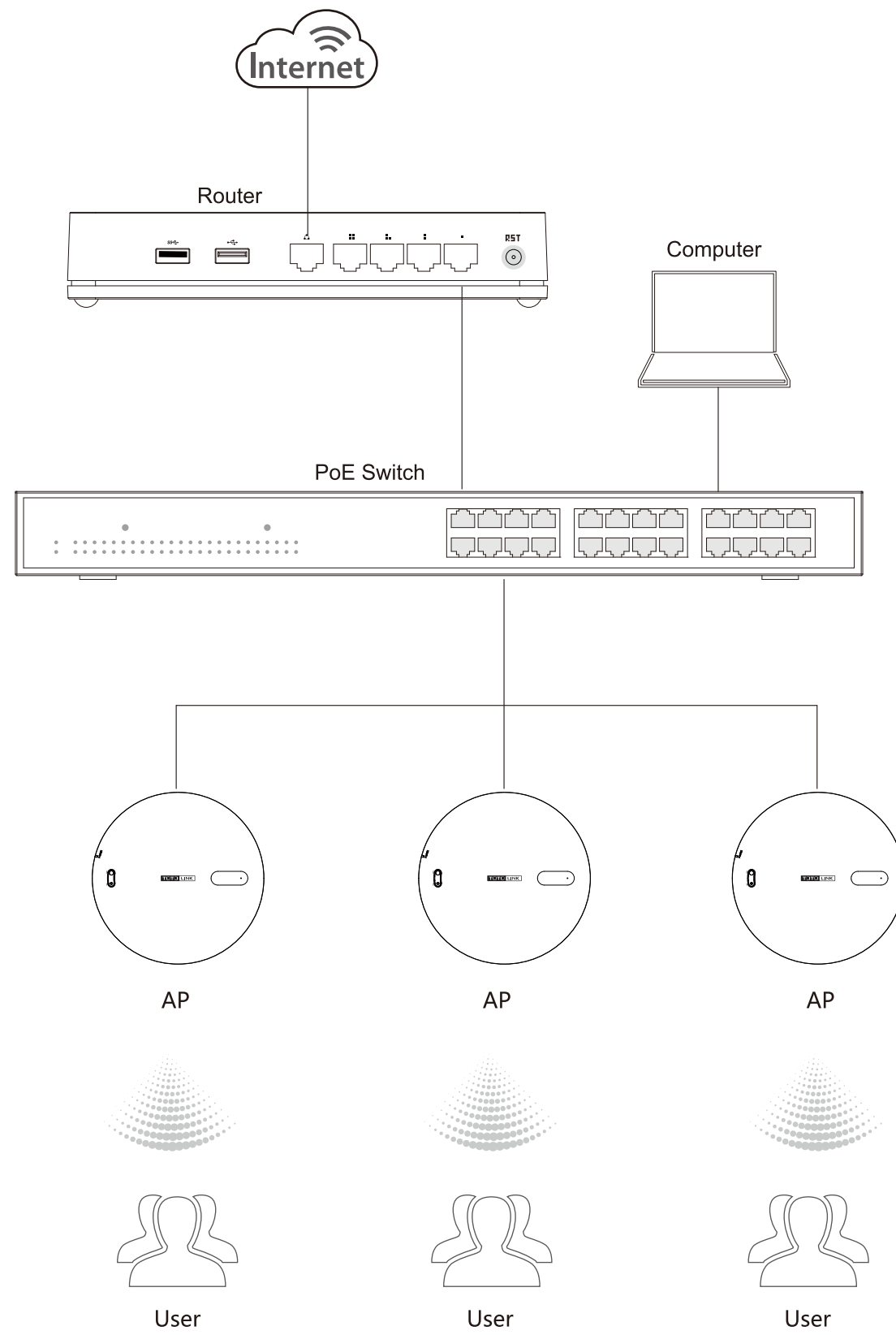
Quick Installation Guide

Wi-Fi6 Wireless Dual Band Ceiling Mount AP

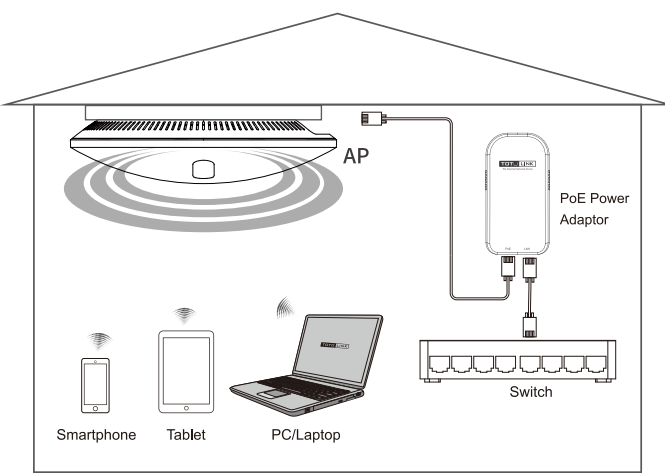
Apply to: CA3000X-PoE/CA1800X-PoE
(Take CA3000X-PoE as an Example)

Copyrights by TOTOLINK All rights reserved. Website: <http://www.totolink.net>
Information in this document is subject to change without prior notice.

1 Hardware Connection



1-2 Multi-AP connection diagram



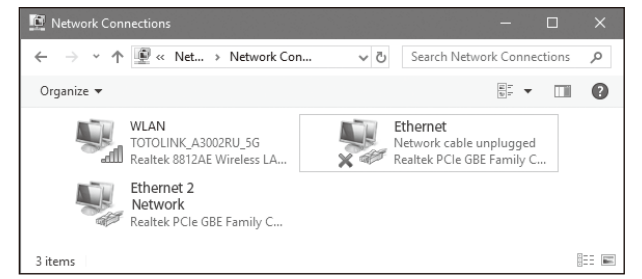
1-1 Single AP setting connection diagram

Description of indicator light, interface and button

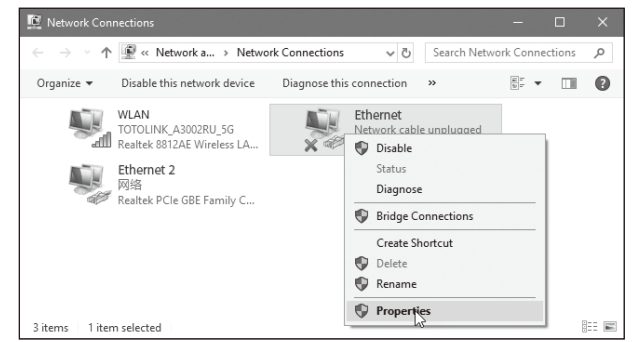
System Status Indicator	The white light is always on, indicating that the power is on.
	The blue light flashes slowly, indicating that the system startup is completed.
	The blue light is always on, indicating that the data is being transmitted.
	The blue light flashes quickly, indicating that if the reset key is pressed for more than 5 seconds, the system will restore the factory setting.
LAN/POE port	This port is used to connect power supply equipment.
RST button	Press the reset key over 5 seconds, and the equipment will return to the factory setting.
WPS button	Press for 1-3 seconds to turn on the WPS function.
DC In port	This port is used to connect the DC48V 0.5A power supply equipment.

2 Set up Computer

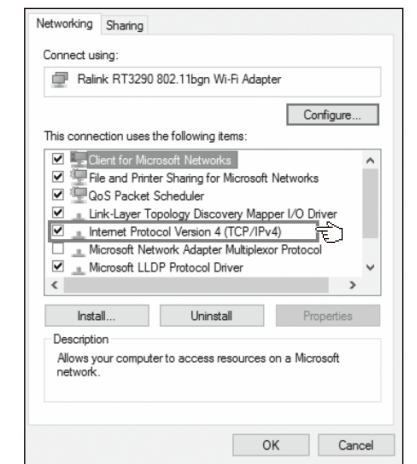
1 As shown below, right click on "Start Menu" to choose **Control Panel** then **Internet** and finally **Network and sharing Center**. After that, click to **change adapter setting**.



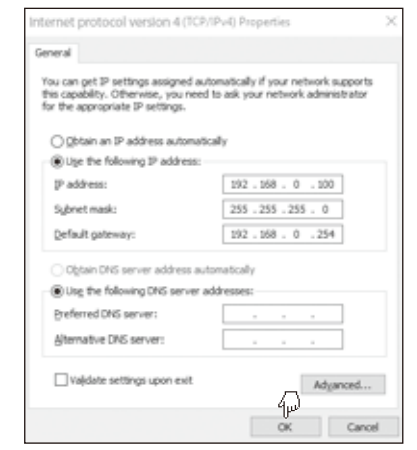
2 After popping up the graphical window below, right click on WLAN Menu and choose "Properties". Finally, properties dialog on a network connection will be pulled up as below.



3 Double click on "Internet Protocol version 4" and then a page of setting up IP Address pops up below.

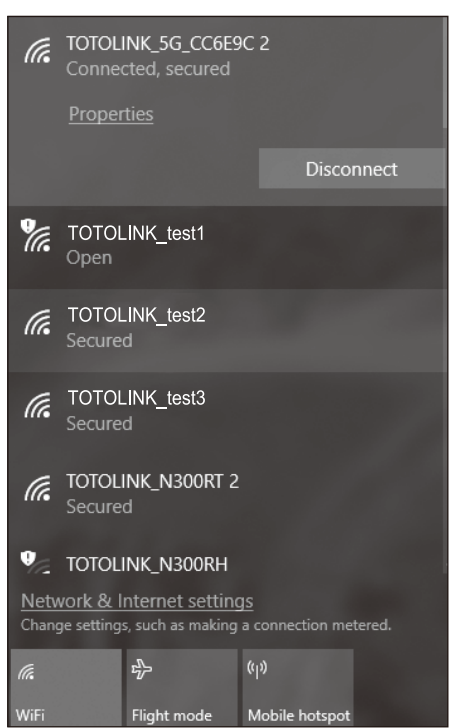


4 Setting up the IP Address manually as below, you need input correct address subnet mask, default gateway except DNS server address. After that, click OK button twice.



2 Set up Computer

5 After setting network parameter, users can manually connect to the TOTOLINK AP Signal. Default network name (SSID) of TOTOLINK AP is 5G:TOTOLINK_5G_XXXXXX, 2.4G: TOTOLINK_XXXXXX, 5G network is recommended.



3 Set up AP

1 Open any browser and enter 192.168.0.254 in the address bar.



2 Enter the password: admin, in the pop-up page and then click LOGIN.



3 First, enter the system status pages and then you can see the system running time, software version, LAN configuration, wireless configuration information and traffic statistics as shown in the picture below.



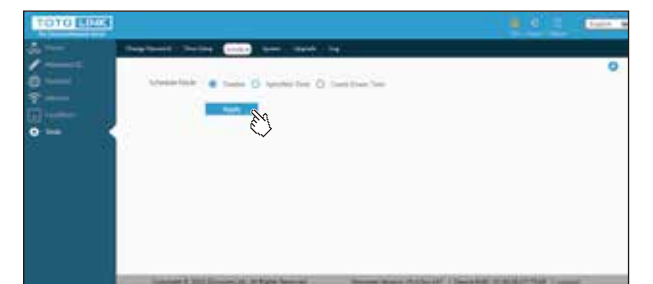
4 5G Wireless Setup, you can change the network name (SSID) and enable the encryption. Please set the password at least 8 digits English or numeric, please click Apply when you finish setting.



5 2.4G Wireless Setup, you can change the network name (SSID) and enable the encryption. Please set the password at least 8 digits English or numeric, please click Apply when you finish setting.



6 Reboot, As picture shown below, you can schedule to restart TOTOLINK AP by your own need.



7 After completion of AP setup, please set the IP address of computer to automatic access as below picture.

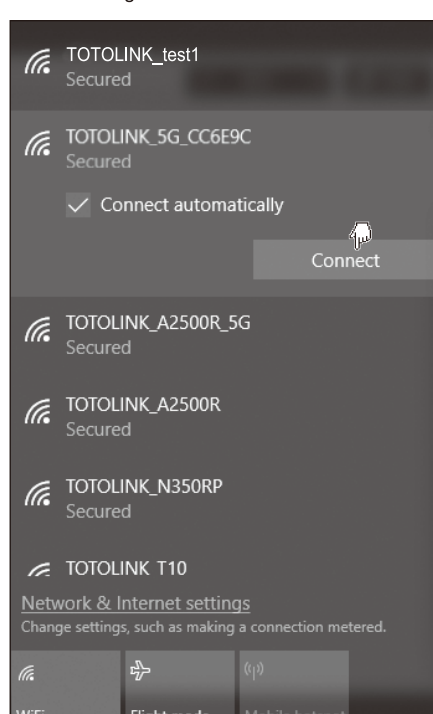


8 Please refer to 1-2 multi-AP connection diagram to connect AP to the external network.

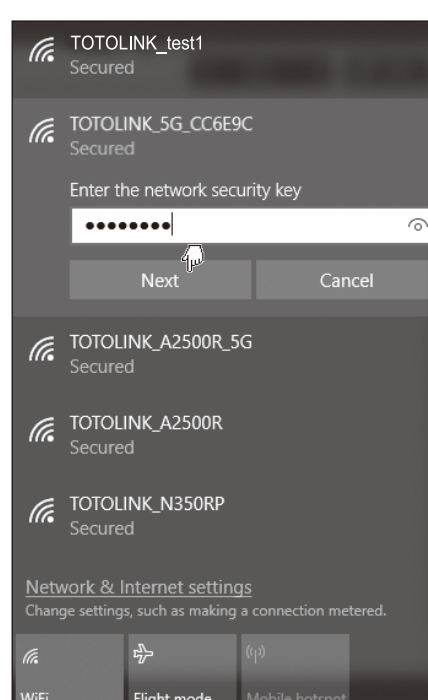
4 Wireless connection

After the router setup is complete, refer to the following steps to connect to the wireless network.

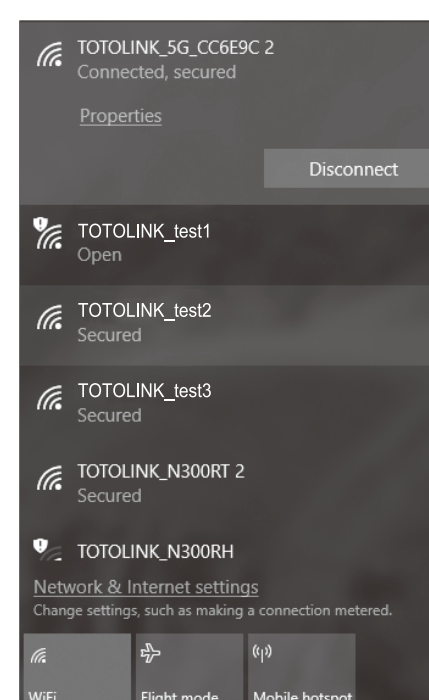
1 Click on the or icon located at the right end of the desktop and then select the router's wireless network name in the pop-up list. Users who can search for 5G signals are recommended to make it a priority.



2 Check "automatic connection" and click "connect", Enter the correct password, and click "next" or "connect".



3 Enjoy your wi-fi after successful wireless network connection.



For users of mobile terminals, please click Settings - WI-FI, select and connect to the wireless router.

FCC Statement

This equipment has been tested and found to comply with the limits for a Class B digital device, pursuant to part 15 of the FCC Rules. These limits are designed to provide reasonable protection against harmful interference in a residential installation. This equipment generates, uses and can radiate radio frequency energy and, if not installed and used in accordance with the instructions, may cause harmful interference to radio communications. However, there is no guarantee that interference will not occur in a particular installation. If this equipment does cause harmful interference to radio or television reception, which can be determined by turning the equipment off and on, the user is encouraged to try to correct the interference by one or more of the following measures:

- Reorient or relocate the receiving antenna.
- Increase the separation between the equipment and receiver.
- Connect the equipment into an outlet on a circuit different from that to which the receiver is connected.
- Consult the dealer or an experienced radio/TV technician for help.

This device complies with part 15 of the FCC Rules. Operation is subject to the following two conditions: (1) This device may not cause harmful interference, and (2) this device must accept any interference received, including interference that may cause undesired operation.

Caution
Any changes or modifications not expressly approved by the party responsible for compliance could void the user's authority to operate the equipment.

Radiation Exposure Statement
This equipment complies with FCC radiation exposure limits set forth for an uncontrolled environment. This transmitter must not be co-located or operating in conjunction with any other antenna or transmitter. This equipment should be installed and operated with minimum distance 20cm between the radiator and your body.

Manufacturer: ZIONCOM ELECTRONICS (SHENZHEN) LTD.
Address: Room 702, Unit D, 4 Building Shenzhen Software Industry Base, Xuefu Road, Nanshan District, Shenzhen, Guangdong, China