

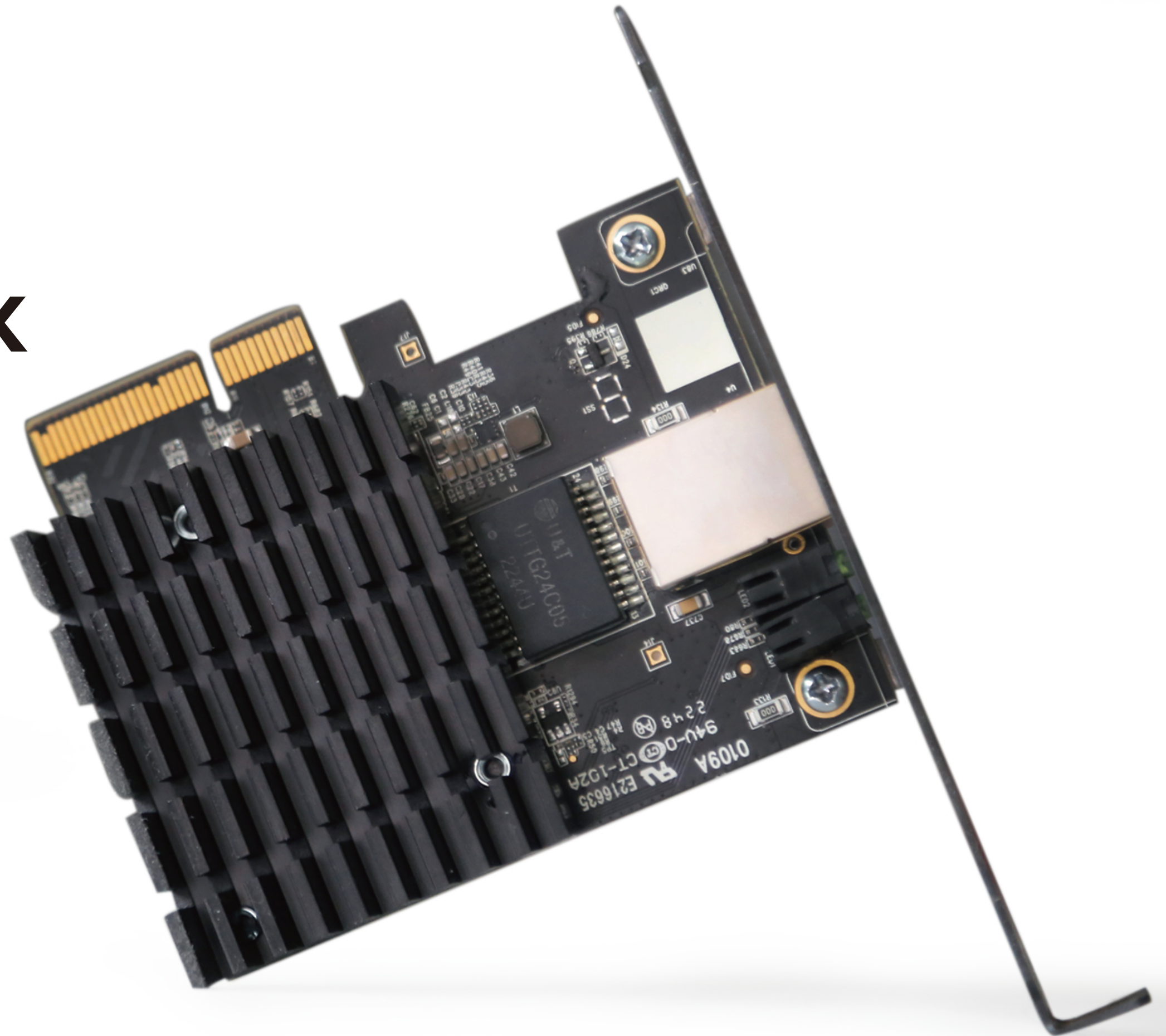
TOTO LINK

The Smartest Network Device

10 Gigabit PCI-E Network Adapter

100M/1G/2.5G/5G/10Gbps PCI-E Adapter which can auto-negotiate transmission speed and provide full duplex mode

PX10G

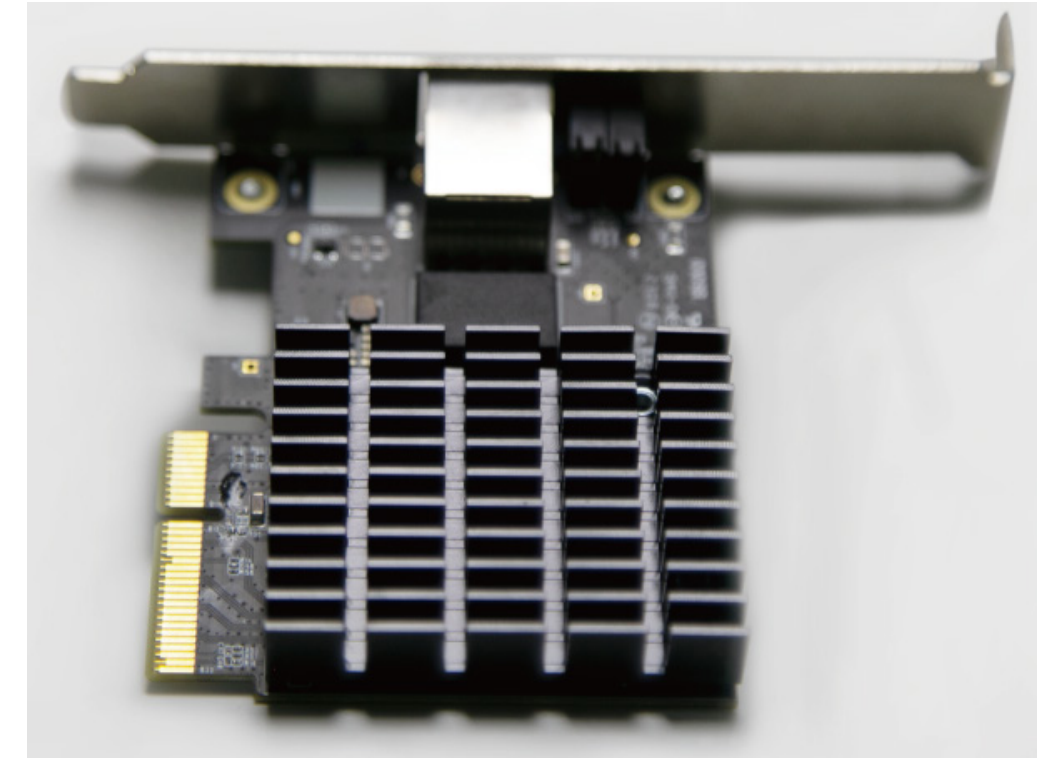
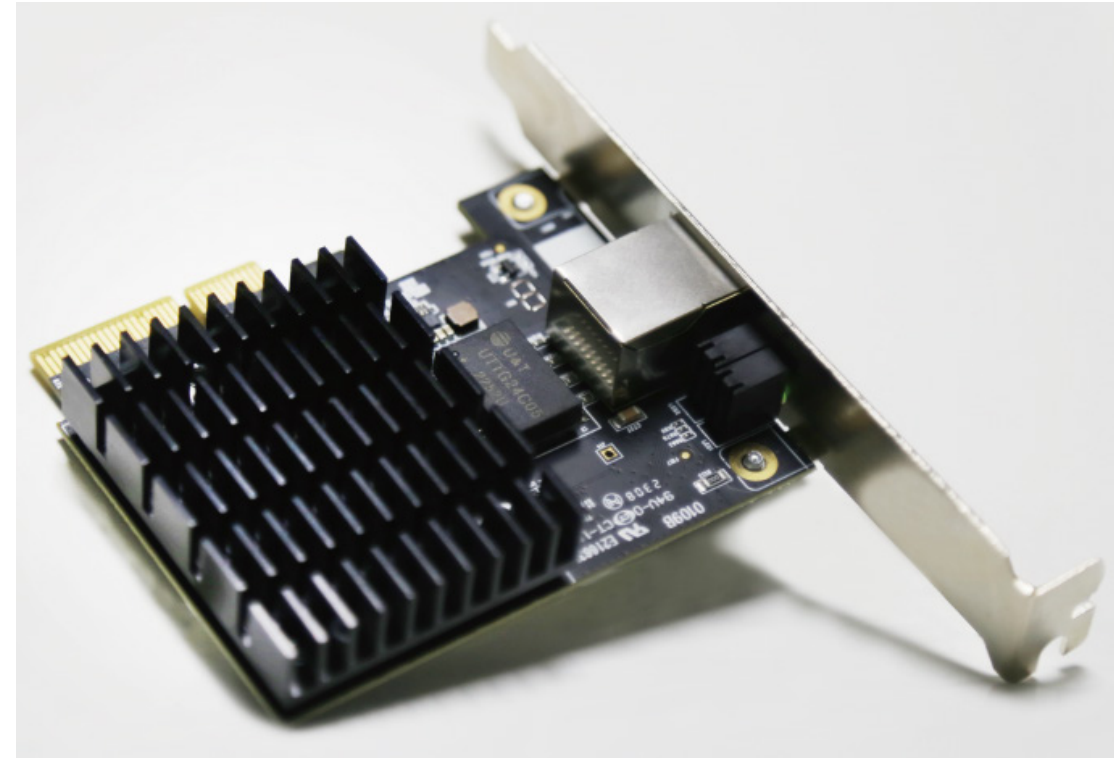


Overview

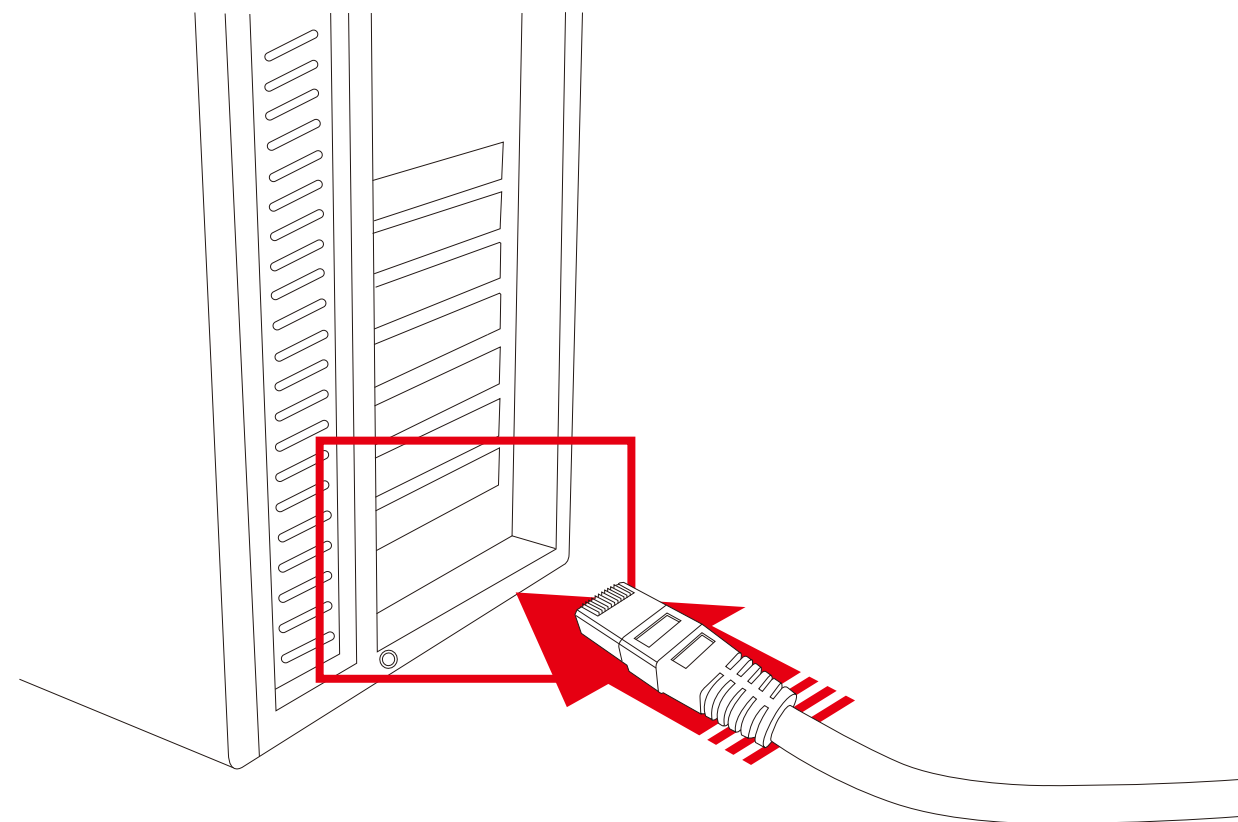
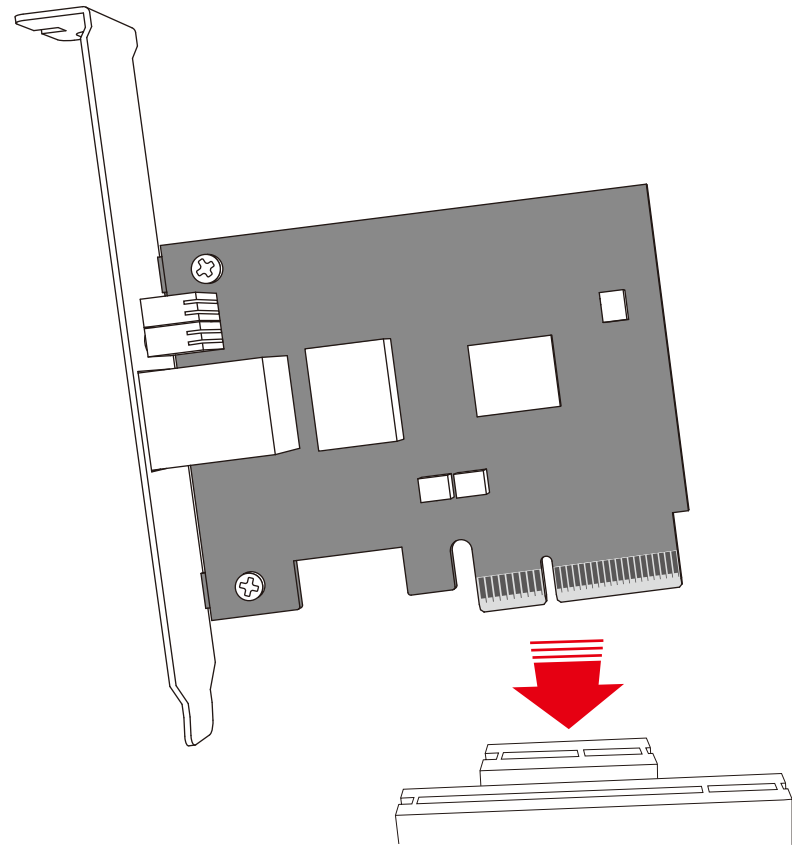
PX10G is a 100M/1G/2.5G/5G/10Gbps PCI-E Adapter which can auto-negotiate transmission speed and provide full duplex mode. It can deliver high transmission rate that is ideal for speeding up data transfers between network servers and other computers, such as local data transmissions.

Features

- Complies with 802.3an, IEEE 802.3bz, IEEE 802.3ab, IEEE 802.3u, IEEE 802.3x standards.
- Integrates 100M/1G/2.5G/5G/10Gbps transceiver.
- Supports PCI Express 3.0 x4 slot.
- Crossover Detection & Auto-correction.
- Supports wake-on-LAN and remote wake-up.
- Supports Full Duplex flow control (IEEE8.2.3x).
- Supports Windows 10/11, Linux.
- Low-Profile and Full-Height Brackets.



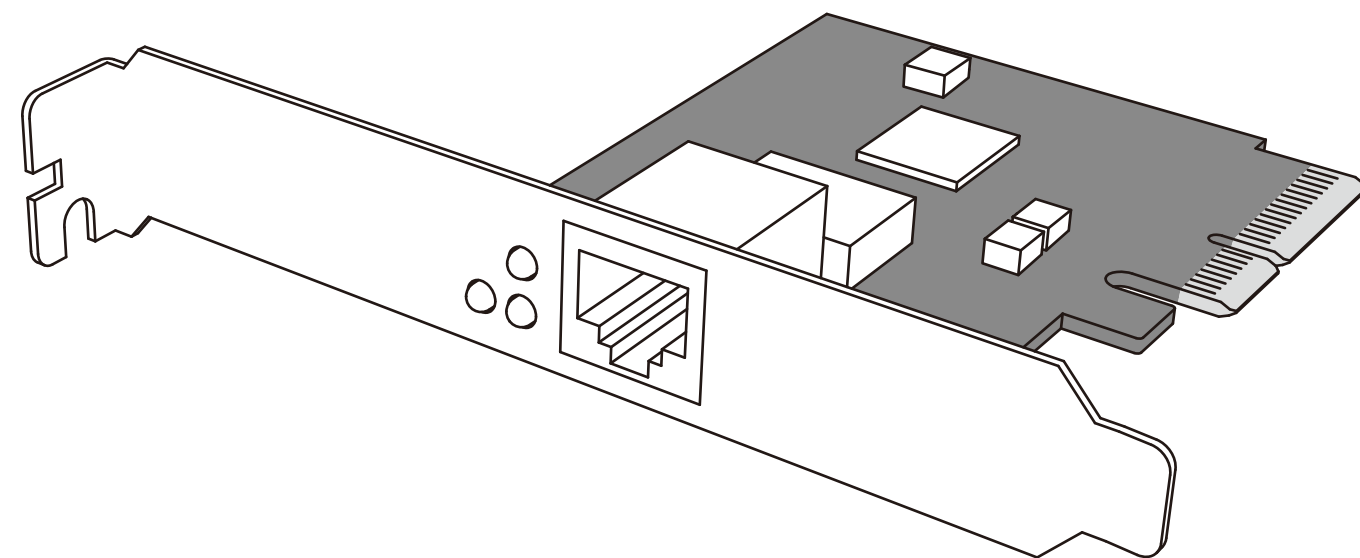
Highlights



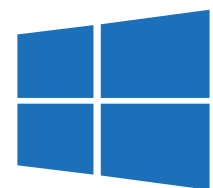
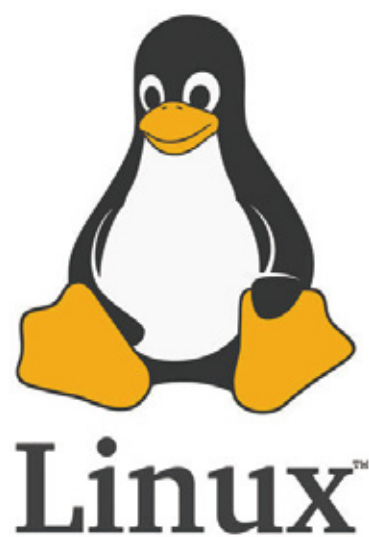
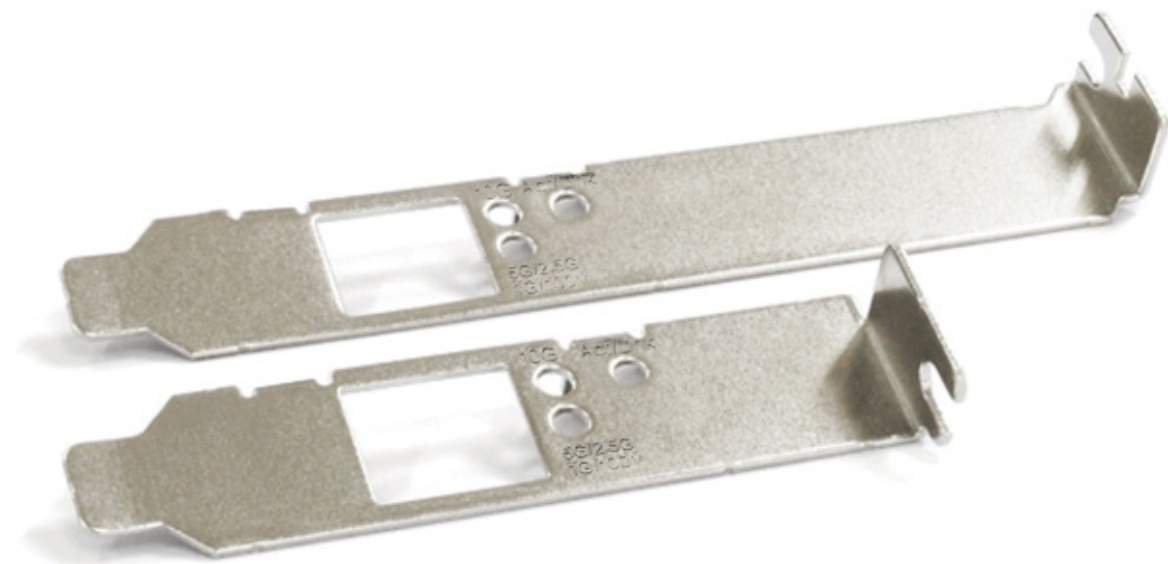
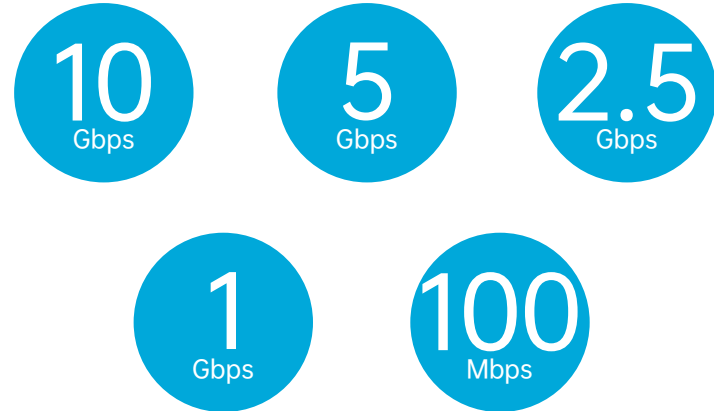
Hyper-fast 10Gbps Networking

Combined with the latest 10GBase-T Technology, PX10G delivers extreme speeds of up to 10 Gbps, which is 10× faster than typical Gigabit adapters, guaranteeing smooth data transmissions for both internet access and local data transmissions.

- ◀◀◀ **10 Gbps Internet Access**
Make full use of your high speed internet access
- ◀◀◀ **10 Gbps NAS Connection**
Hyper-fast local data transmissions
- ◀◀◀ **10 Gbps Host Server**
High hardware configuration for a powerful server



Highlights



Windows 10



Windows 11

Complete Compatibility

PX10G is compatible with current network standards, including 10/5/2.5/1Gbps and 100Mbps, for seamless backward compatibility.

Low-Profile and Full-Height Brackets

In addition to the standard bracket, a low-profile bracket is provided for mini tower computer cases. Customized options give you the flexibility to find a bracket that perfectly fits your board design.

Comprehensive System Support

Fully compatible with Windows 10/11, Linux to meet your diverse operating system needs.

Specifications

Model : PG10X

Standards : IEEE 802.3, IEEE 802.3u, IEEE 802.3ab, IEEE 802.3bz,
IEEE802.3an, IEEE802.3az, IEEE 802.3x

Interface : 1*100M/1G/2.5G/5G/10Gbps RJ45 port
1*PCI Express 3.0 x4

Transmission Rate : 100M/1G/2.5G/5G/10Gbps for Full-Duplex mode

LED Indicator : 1*10G Link LED

1*5G/2.5G/1G/100M Link LED

1*Active LED

Package Contents : PX10G Network Adapter *1

Resource CD *1

Low Profile Bracket *1

Quick Installation Guide*1

System Requirement : Windows 10/11, Linux

Working Environment :

Operating Temperature: 0°C~40 °C (32 °F~104°F)

Storage Temperature: -40°C~70 °C (-40 °F~158°F)

Operating Humidity: 10%~90% non-condensing

Storage Humidity: 5%~90% non-condensing

ZIONCOM (HK) TECHNOLOGY LIMITED

Copyright©ZIONCOM (HK) TECHNOLOGY CO., LTD. All Rights Reserved.

Headquarter & R&D Center

7/F, Unit D, 4 Building Shenzhen Software Industry Base, Xuefu Road,
Nanshan District, Shenzhen, Guangdong, China

Tel : +86-755-3686-1138 | FAX : +86-755-3686-1139

Factory

Building A1 & A2 Lantian Technology Park, Xinyu Road, Xinqiao Henggang Block,
Shajing Street, Baoan District, Shenzhen, Guangdong, China

Tel : +86-755-3686-1188 | FAX : +86-755-3686-1133