



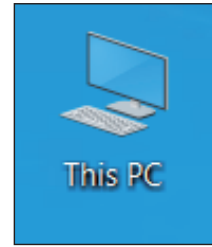
Quick Installation Guide

WiFi 6 Wireless USB Adapter

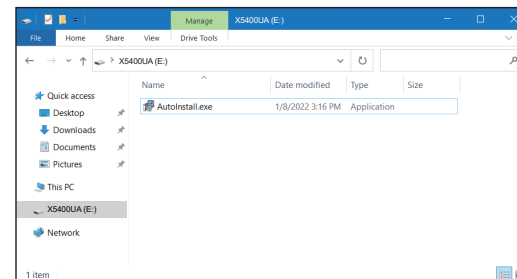
Copyrights © TOTOLINK All rights reserved. Website: <http://www.totolink.net>
Information in this document is subject to change without prior notice.

2. Driver Installation

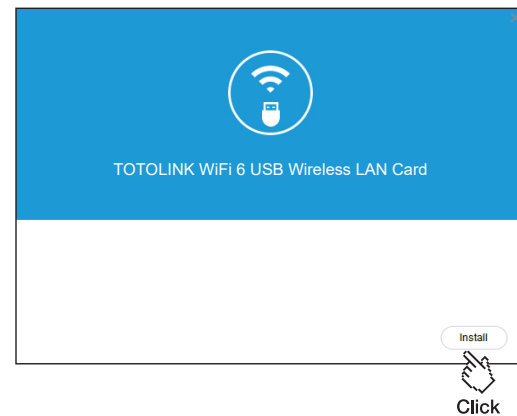
- 1 Double click "This PC" icon to find the "Driver X5400UA" icon, and then double-click it. (Note: The icon is based on Windows 10, it may be different on other Windows.)



- 2 Double click the "Autoinstall.exe" icon to start the installation.

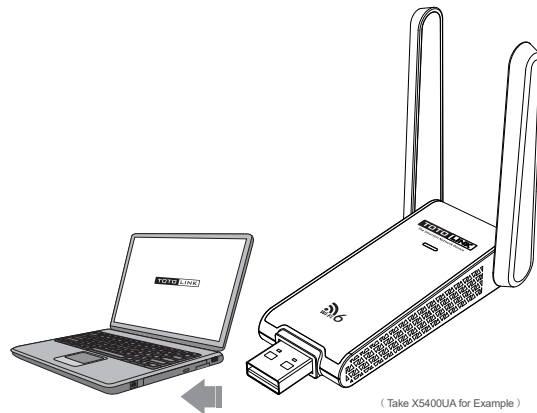


- 3 It takes several seconds to finish the installation, please wait until the installation page disappears.

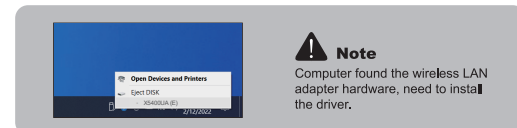


1. Hardware Installation

Please plug the wireless adapter into your PC or Laptop's USB port.



(Take X5400UA for Example)

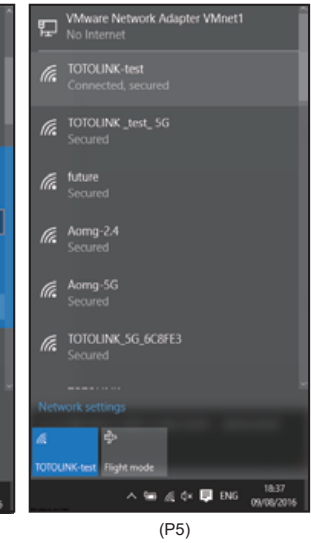
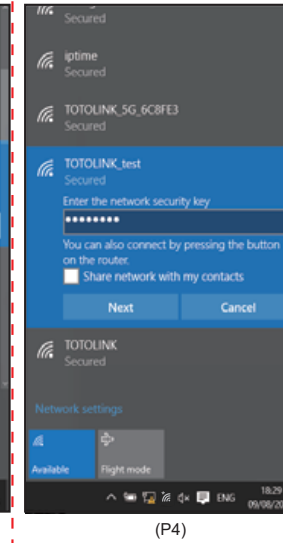
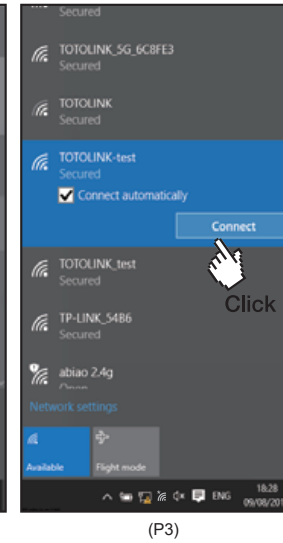
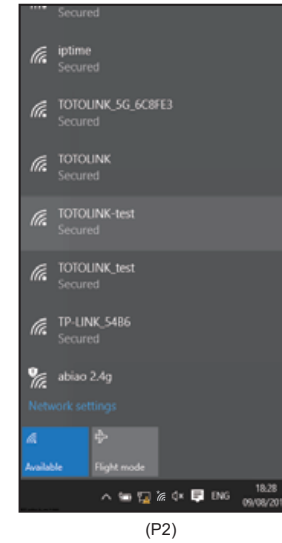


Note
Computer found the wireless LAN adapter hardware, need to install the driver.

3. Connect to Wireless Router

(For Windows 10)

- 1 Click the network icon at the bottom right of your PC.
- 2 Search for 2.4GHz or 5GHz Wi-Fi SSID.(P2)
- 3 Choose your Router's SSID, click Connect. (P3)
- 4 Enter password of the Wi-Fi.(P4)
- 5 Wi-Fi connected successfully.(P5)



4. FAQs

1. Why after installing USB card and driver, the lower right corner of computer still prompt USB card does not exist?

It is possible that the computer did not recognize your USB card, please change the USB interface and try it again. Another possibility is the USB card was blocked by the anti-virus software during the process of installing the driver. It is recommended to close the firewall and anti-virus software temporarily when installing the driver, and open it after the driver is installed.

2. After inserting the wireless network card to install the driver, the icon is displayed, the network cannot be connected, and the network is unavailable.

Right-click the open icon, select "Open and Network Sharing Center", open "Change Adapter Settings" in the upper-left corner of the page, and confirm that the wireless network card adapter is on. If it is closed, select the corresponding network card and right-click "Enable".

3. How to place the antenna to get the best wireless signal?

For the best Internet experience, keep the NIC antenna perpendicular to the horizontal plane.

4. What should I do if I am mistakenly intercepted by security protection software?

If there is anti-virus and anti-Trojan horse and other security software installed in the system, the security software may be blocked during the installation process. Please allow the client program to run or exit the anti-virus software.

Manufacturer: ZIONCOM TECHNOLOGY(SHENZHEN)LIMITED
Address: 3/F, Building A2, No. 5, Henggangxia Street, Xiangshan Community, Xinqiao Street, Bao'an District, Shenzhen, China

FCC warning

FCC Statement

This equipment has been tested and found to comply with the limits for a Class B digital device, pursuant to part 15 of the FCC Rules. These limits are designed to provide reasonable protection against harmful interference in a residential installation. This equipment generates, uses and can radiate radio frequency energy and, if not installed and used in accordance with the instructions, may cause harmful interference to radio communications. However, there is no guarantee that interference will not occur in a particular installation. If this equipment does cause harmful interference to radio or television reception, which can be determined by turning the equipment off and on, the user is encouraged to try to correct the interference by one or more of the following measures:

- Reorient or relocate the receiving antenna.
 - Increase the separation between the equipment and receiver.
 - Connect the equipment into an outlet on a circuit different from that to which the receiver is connected.
 - Consult the dealer or an experienced radio/TV technician for help.
- This device complies with part 15 of the FCC Rules. Operation is subject to the following two conditions: (1) This device may not cause harmful interference, and (2) this device must accept any interference received, including interference that may cause undesired operation.

Caution

Any changes or modifications not expressly approved by the party responsible for compliance could void the user's authority to operate the equipment.

Radiation Exposure Statement

This equipment complies with FCC radiation exposure limits set forth for an uncontrolled environment.
This transmitter must not be co-located or operating in conjunction with any other antenna or transmitter.
This equipment should be installed and operated with minimum distance 20cm between the radiator & your body.

Answering the wireless and paper in the year for the paperless world.